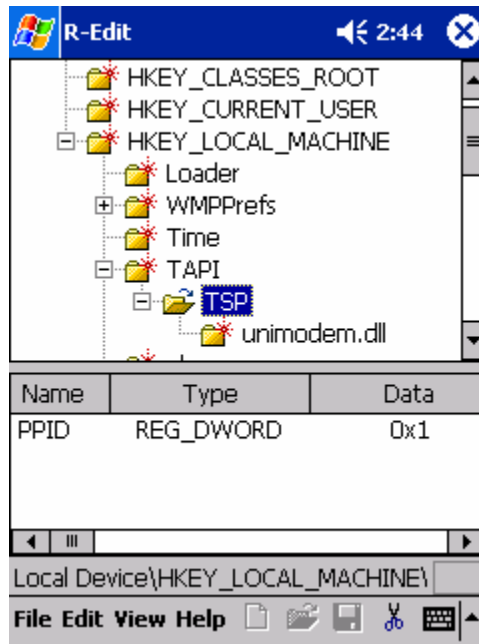


# R-Edit

Registry Editor for windows CE 3.0 and up

By Pocketfleet



R-Edit is a simple registry editor for the Pocket PC. Windows CE has no built in editor and there are many available at what we feel is a high price. Pocketfleet is therefore bringing you this basic registry editor for a very low price.

## INSTALLATION:

Unzip the downloaded file to a temporary folder. Run the setup.exe program and follow the on-screen instructions., If you have any difficulty, try our FAQ pages and Software installation pages on the Pocketfleet support web site at

<http://www.pocketfleet.homeunix.com> or email [pockethelp@rogers.com](mailto:pockethelp@rogers.com)

**WARNING!** Changing registry values can cause loss of data and render the Pocket PC inoperative. If this should happen, see your instruction manual for details on how to reset the device. [Pocketfleet and Don Laverdure strongly advises that you avoid changing the registry and is not responsible for loss of data or damage to the device as a result.](#)

## Windows CE Registry

Windows CE stores its configuration information in a database called the registry. The registry contains information about system hardware, installed programs, and property settings. Windows CE continually references this information during its operation.

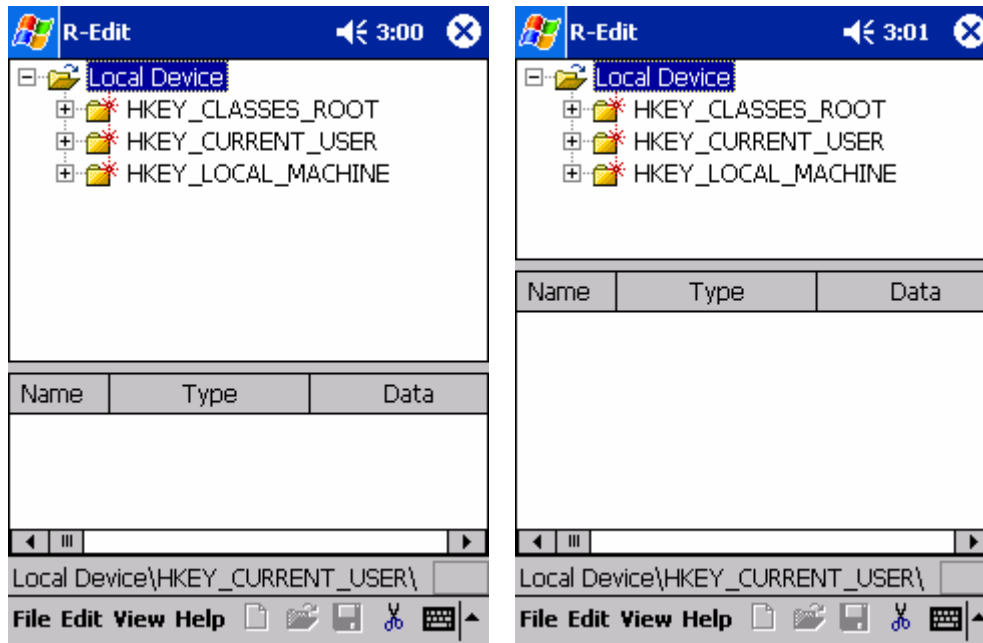
Registry editors are available that enable you to inspect and modify the registry. However, you should not need to do so. Instead, allow Windows CE programs to modify the system registry as needed. It is strongly recommended that you do not edit registry settings yourself.

### Warning

- Incorrectly editing the registry may severely affect your system. At the very least, you should back up any valued data on the computer before making changes to the registry.

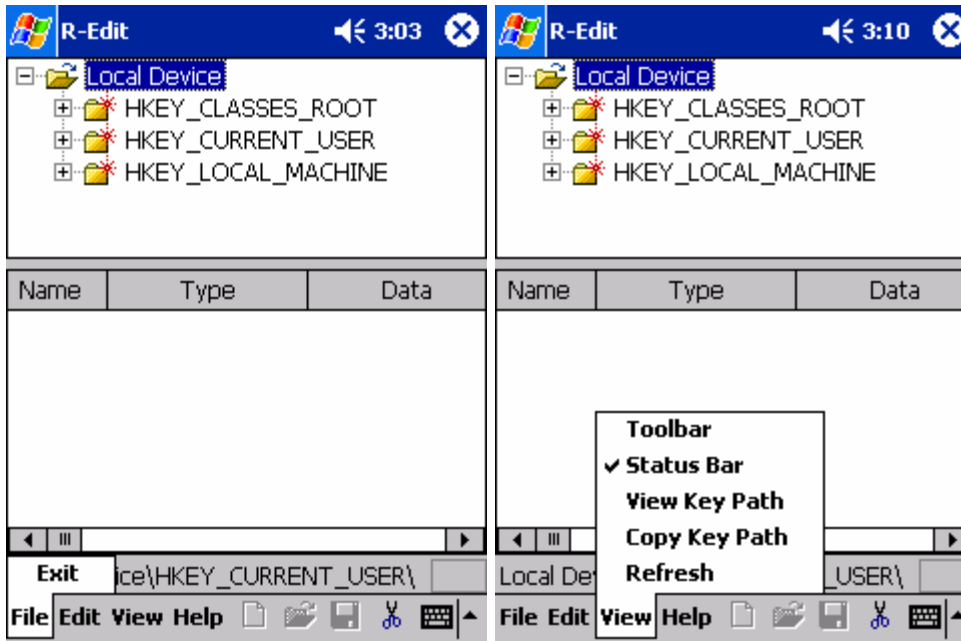
If you do damage your system registry, you may be able to repair the registry or restore it to the same version you were using when you last successfully reset your Pocket PC. Otherwise, you must perform a hard reset. When you reset your system, you will lose any changes that have been made, such as Service Pack upgrades, and added software which you must reinstall separately.

Resizing the display window. Tap and drag the bar between the two window panes to resize the display



## MENU OPTIONS:

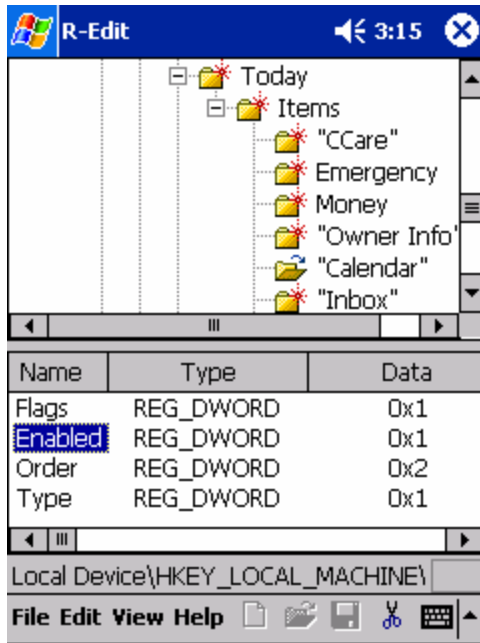
- FILE
  - EXIT Exits the program
- EDIT
  - CUT - Cut a registry entry or key
- VIEW
  - TOOLBAR – Always in view
  - STATUS BAR – Hide or show the status bar above the toolbar
  - VIEW KEY PATH - Brings up a message box with the path listed.
  - COPY KEY PATH – Places the selected path on the clipboard
  - REFRESH – Reloads the registry into R-Edit
- HELP
  - ABOUT – Displays version and support information



## EXAMPLE :

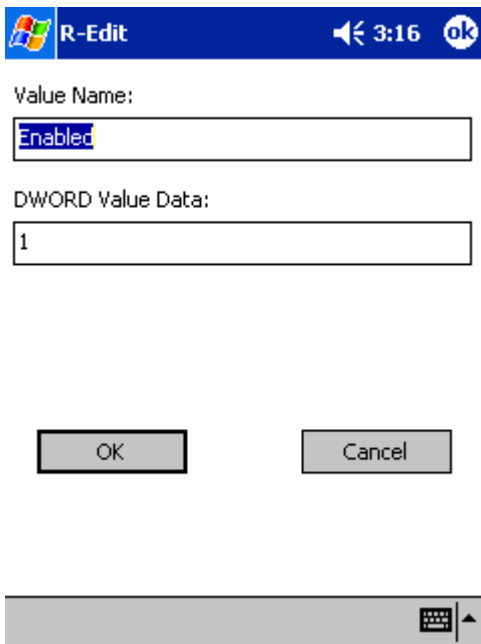
*TURNING OFF THE CONTACTS TODAY SCREEN ITEM USING THE REGISTRY*

1. Open the HKEY\_LOCAL\_MACHINE
2. Open SOFTWARE
3. Open MICROSOFT
4. Open TODAY
5. Open ITEMS
6. Open "Calendar"

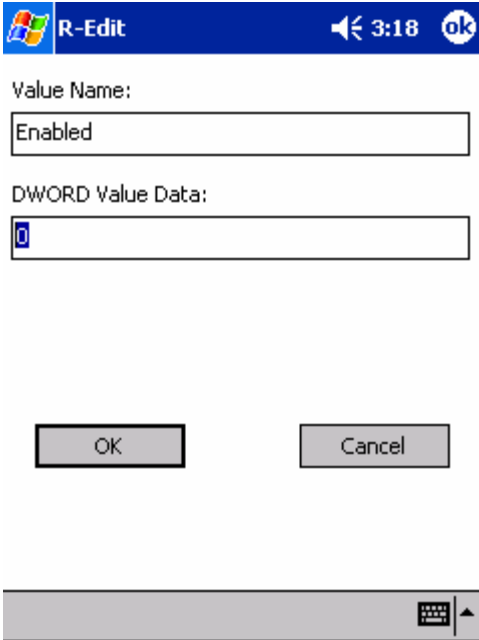


7.

**Double tap** on the key ENABLED

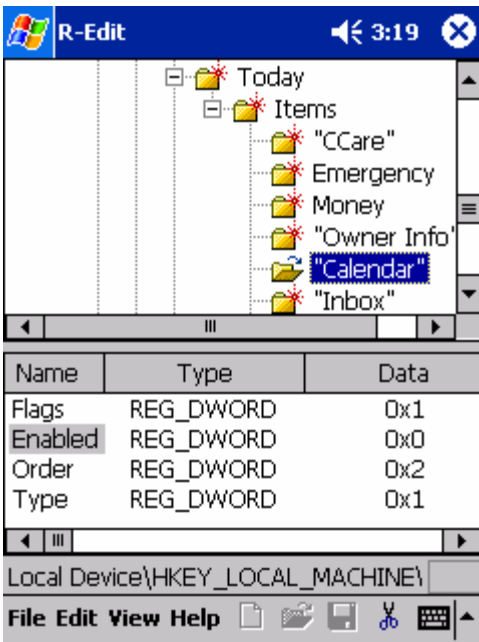


Change the value to 0 (ZERO)



Save the change by selecting OK

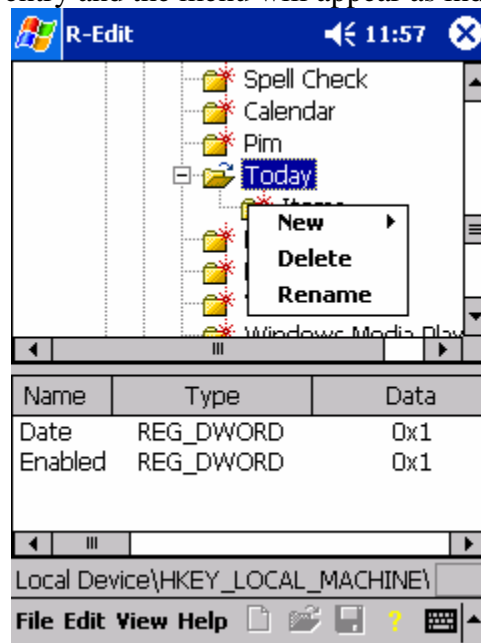
The data will read 0 or 0x0 hex.



The Calendar option on the today screen is now turned off. You may have to push the reset button (Soft Reset) or open the today properties screen and close it for the changes to take effect. To turn the calendar option back on, you can repeat the above steps and set the value to 1, or use the today options menu in setup.

## ADD, DELETE or RENAME Keys

Tap and hold the registry entry and the menu will appear as indicated in this screen shot.



## REGISTRY TIPS AND TRICKS:

### Enable Policy Restrictions

- Screen Rotate to Landscape
- Modify Low Battery Warning
- Use Clear Type to smooth screen fonts
- Disable Start Menu Animation
- Display date & Time in title bar
- Change Storage Card Name
- TCP/IP Hosts file equivalent
- File Associations
- Enable Microsoft Original backlight screens
- Change system font
- Change Internet Explorer Codepage
- Start Items
- Serial/USB/IrDA and Direct cable connections
- TCP/IP Configuration.
- Windows Animations
- Default Input Method

Change TCP Window size  
Change glyph Cache, (Font Cache)  
Change scroll bar sizes  
Enable HTML Clear Type  
Card Battery Warning  
Store temp internet files on SC card  
Store Avantgo on storage card  
Enable left and right media player  
Media player background quality  
Remove a Today item  
Pocket Internet explorer script errors  
Pocket Internet Explorer show as 5.5

- Pocket PC 2002 devices includes a system policy system to prevent users from downloading and installing new programs via Pocket Internet Explorer, Inbox, File Explorer, ActiveSync or beaming between devices or renaming files.

Browse to HKEY\_LOCAL\_MACHINE\ControlPanel\AdminPassword\

Rename the "Redirect" value to "xRedirect"

Soft reset and go to Start > Settings > System tab > Policy applet to set the policy restriction on the device.

•

### **Screen rotate on Toshiba e310**

On the Toshiba e310 (Pocket PC 2002) go to:

HKLM\Drivers\Display\mq120

Change the Rotate key from 0 to 1 and reset

You have to re-align the screen which can be tricky as all the buttons are as they were in portrait mode. Once re-aligned it works perfectly!

- Pocket PC 2002 displays a low battery warning when the main battery reaches 40%, it is displayed as a bubble notification in the title bar along with a sound. This notification is not user configurable in the settings like other notifications, here is how to make it appear so in the settings, so you can customize it for example to only play the sound on not display the bubble notification.

Browse to HKEY\_CURRENT\_USER\ControlPanel\Notifications\{A877D663-239C-47a7-9304-0D347F580408}\

Create a String value named "Default" and set its value to "Low battery warning".

Now go to Start > Settings > Personal tab > Sounds & Notifications applet > Notifications tab, select "Low battery warning" in the "Select an event" drop-down list and you can customize it.

- Pocket PC 2002 now allows you to smooth the edges of screen fonts using Clear Type.

Here is how to enable or disable it :

Browse to HKEY\_CURRENT\_USER\Software\Microsoft\Shell\

If it doesn't exist already, create a DWORD value named "Clear Type".

Set the "Clear Type" value data to 1 to enable Clear Type, or 0 to disable it.

- The Pocket PC 2002 feature a transition effect for the Start menu, which looks good but slower than no effect.

Here is how to disable it :

Browse to HKEY\_LOCAL\_MACHINE\SYSTEM\GWE\Menu\

Change the "AniType" value from 6 to 0.

- The Pocket PC display the time in the title bar, the user can select Analog or Digital using tap&hold on the time.

But some people also want the date to be easily available, this was actually available on Palm-size PC devices.

Fortunately there is a tweak to display both the date and time instead of time only in the Pocket PC title bar :

Browse to HKEY\_LOCAL\_MACHINE\SOFTWARE\Microsoft\Shell\

Create a binary value named "TBOpt" and set its value to "13 00 00 00".

Save any unsaved document and reset your Pocket PC.

- By default, the system assign a name for mounted volumes, "Storage Card" on an English system (this name change with localisation).

You cannot rename this folder, as it is an IFS (Installable Filesystem) and not a simple folder.

However, you can tell the system to use another name when mounting a volume.

Browse to HKEY\_LOCAL\_MACHINE\Drivers\PCMCIA\ATADisk\

Create a string value named "Folder" and type the name you want for storage cards as the data.

This name will now be used for the first ATA Card you insert, and the same name followed by a number if you insert more than one.

You can also use this for other storage drivers, for example to use "SCSI Disk" for drives used with Adaptec APA-1460, include a string "Folder" = "SCSI Disk" in \HKEY\_LOCAL\_MACHINE\Drivers\PCMCIA\ADPDisk\.

Windows CE does not include a Host file for static names to IP mapping, these are instead stored in the registry.

Browse to HKEY\_LOCAL\_MACHINE\Comm\Tcpip\Hosts\

Each host is a subkey.

- The name of the key is the hostname

- The value named "ipaddr" contain the 4 bytes of the address as binary
- Aliases can be defined in a multi-string value named "aliases"
  - • For permanent hosts, there should be no "ExpireTime" value, this can be a binary value used to define the time to live in milliseconds

Like any Windows, files are associated with applications depending on their extensions.

for example, a .txt file is associated with \Windows\pword.exe so that when you want to open it, the system know it can be open using Pocket Word.

Let's have a look at how it works...

Open \HKEY\_CLASSES\_ROOT\.txt\

You'll see there are two values, "Default" which define the file type and "Content Type" which define its MIME type.

Now open \HKEY\_CLASSES\_ROOT\txtfile\

This is where the association information are really stored.

Why using another key ? Well, it's simple, imagine you want to associate both .txt and .asc, it's different extentions but they are exactly the same kind of files, so the "Default" value can be "txtfile" for both and you have a single location for the association.

\HKEY\_CLASSES\_ROOT\txtfile\ contain a default value with the text definition of the file "Text only note", this is used by some applications to display the file type.

Default Icon\ is a key used to define the icon to use for these document files, the default value contain [filename],[-icon#], most applications contain icons for their documents, so here "\Windows\pword.exe,-110" tell the system to use the icon #110 of pword.exe.

The Shell\ key contain subkeys, this could have been simpler, but Windows CE needed to use the same association style as Windows 9x/NT.

So the Shell\ key contain commands you can perform on files, the only supported command on the Pocket PC is "Open" so there is only an Open\ key.

That key could contain the command name, like default="Open in Pocket Word", but again that's not used on Pocket PC.

each command key contain a "Command\" subkey with a default value that define the command to use to perform the command, "\Windows\pword.exe %1" for exemple, %1 is the first parameter, which will be the document filename.

This means if you tap on \mytext.txt, Windows will execute "\Windows\pword.exe \mytext.txt".

Another sample :

```
[HKEY_CLASSES_ROOT\.htm]
```

```
default="htmlfile"
```

```
"Content Type"="text/html"
```

```
[HKEY_CLASSES_ROOT\.html]
```

```
default="htmlfile"
```

```
"Content Type"="text/html"
```

```
[HKEY_CLASSES_ROOT\htmlfile]
```

```
default="HTML Document"
```

```
[HKEY_CLASSES_ROOT\htmlfile\DefaultIcon]
```

```
default="iexplore.exe,-1003"
```

```
[HKEY_CLASSES_ROOT\htmlfile\Shell\Open\Command]
```

```
default="iexplore.exe file:%1"
```

the two first link .htm and .html to the htmlfile type, which then declare the icon to

use and the command to open.

If you want to define .htt as an HTML file, just add

the key "HKEY\_CLASSES\_ROOT\.htt" with default="htmlfile" in the registry

To add a new file type, just create the structure like the ones you've seen for text and HTML.

- Many OEM replace the Backlight and/or Contrast settings applet by their own versions :

Compaq iPaq 3650 :

OEM Backlight applet, same as original but with a Brightness tab for iPaq special purposes.

Removed the Contrast applet because contrast settings are not supported on the iPaq.

Casio EM-500 :

OEM Brightness applet that replace both the original Backlight and Contrast.

Added the ability to set different brightness values for battery and external power operations.

Removed "Turn on backlight when a button is pressed or the screen is tapped" settings because it is not supported, replaced by the Auto Dim settings.

Included the contrast in the same applet, the system one does work, but their device act at the oposite of what it should (Dark is Light and Light is Dark).

HP Jornada 548 :

OEM Backlight applet, removed the External Power tab the "Turn on backlight when a button is pressed or the screen is tapped" setting for Battery Power because these settings are not supported.

Now, here is how to restore the Microsoft original applets on any Pocket PC, note that most settings OEM have been hiding with their own applet does not work anyway, the OEM applet(s) will still be available in the Settings.

For the Backlight applet, browse to

HKEY\_LOCAL\_MACHINE\ControlPanel\Backlight\

Rename the "Redirect" value to "Redirect disabled", you could just delete it, but renaming it makes it easy to go back to the OEM setting.

For the Contrast applet, do the same with

HKEY\_LOCAL\_MACHINE\ControlPanel\Contrast\

I haven't found a way to change the global system font (except replacing the tahoma.ttf and tahomabd.ttf files with a renamed version of the font you want).

But it is possible to change some UI font by changing the "Nm" value in the following keys :

- HKEY\_LOCAL\_MACHINE\SYSTEM\GDI\SYSFNT\ - Treeview and Listview items
- HKEY\_LOCAL\_MACHINE\SYSTEM\GWE\Menu\BarFnt\ - Menu text (on the bar itself)
- HKEYI see another location to be altered, and have done so in my EG-800 with a few fonts. Don't know what it does, but no harm so far  
HKEY\_LOCAL\_MACHINE\SYSTEM\GWE\OOMFnt\Nm "Abadi MT Condensed Light" (In my case - this font renders interesting results in Contacts and Calendar, where bold characters appear in many fields. Easy to read, and small width.)\_LOCAL\_MACHINE\SYSTEM\GWE\Menu\PopFnt\ - Menu items text

- Browse to HKEY\_LOCAL\_MACHINE\SOFTWARE\Microsoft\Internet Explorer\International\  
Set the "Default\_CodePage" value to the codepage you want to use (1252 'Western Alphabet' is the default codepage).  
A complete list of codepages is available at  
HKEY\_CLASSES\_ROOT\MIME\Database\Codepage\, look at the "Description" value for each codepage subkey.
- HKEY\_LOCAL\_MACHINE\SOFTWARE\Microsoft\Shell\Extensions\NewMenu  
u  
(Changes the New Menu on the today screen)

-----

HKEY\_LOCAL\_MACHINE\SOFTWARE\Microsoft\Shell\Start Items  
(Pick what starts on a soft reset)

- This allow you to connect to a computer using a serial, USB or infrared dial-up connection.

Browse to HKEY\_CURRENT\_USER\Comm\RasBook\  
 Find the key for the USB, Serial or IrDA connection you want to use.  
 Copy the "Entry" value.  
 Go back to HKEY\_CURRENT\_USER\Comm\RasBook\  
 Create a new key with the name you want for your connection, don't use "" at the beginning, for exemple : "RAS USB Cable".  
 Paste the value you copied in that key.  
 This connection will now be available in Start, Programs, Connections.

MSDN provide a great document on all the configurable parameters of Windows CE TCP/IP.

I will not explain all here at it's very specific and well explained on MSDN, just have a look at [Parameters Configurable Using the Registry Editor](#).

- Windows can be animated when you open an application, close it, etc.

Browse to \HKLM\SYSTEM\GWE\  
 Change the "Animate" value from 0 to 1.

The Keyboard (Pocket PC default) and the Character Recognizer both seems to work correctly as the default input method, but Transcriber does not.

Look in HKEY\_CLASSES\_ROOT\CLSID\ for input panels ClassIDs (input panels have the IsSIPInputMethod\ subkey).

For exemple :

Input Method	ClassID
Keyboard	{42429667-ae04-11d0-a4f8-00aa00a749b9}
Character Recognizer	{42429690-ae04-11d0-a4f8-00aa00a749b9}
Transcriber	{F0034DD0-2AD4-11d1-9CB0-E84BE8000000}

- While you're there, you can change their name ("Default" value) and enable/disable them ("IsSIPInputMethod\Default" value).

Browse to HKEY\_CURRENT\_USER\ControlPanel\Sip\

Change the "DefaultIm" value to the ClassID string of the input method you want to use as the default.

- The TCP receive window size is the amount of receive data (in bytes) that can be buffered at one time on a connection. The sending host can send only that amount of data before waiting for an acknowledgment and window update from the receiving host.

Using a larger TcpWindowSize will allow to receive more data without sending Ack, this will provide better network performances on reliable networks (if it must resend a lot, a smaller TcpWindowSize may be more appropriate).

Browse to HKEY\_LOCAL\_MACHINE\Comm\Tcpip\Parms\

Change the "TcpWindowSize" value from 32768 to 65535.

- You can change the memory used to cache fonts glyphs, this allow you to use more memory to speed up the display.

Browse to HKEY\_LOCAL\_MACHINE\SYSTEM\GDI\GLYPHCACHE\

You can change the "limit" value :

- 4096 : this will slow down the display, but use less memory (default setting on Palm-size PC)
- 8192 : this is the default value on Pocket PC, average memory/performances
- 16384 : this will speed up the display, but use more memory, twice the default Pocket PC value

I don't know about asian versions, maybe they already use 16384 as their default value, if you have an asian system, let me know.

- You can change the width and height of scroll bars, make them bigger if you have difficulties with the small buttons, or make them smaller if you want more space for other data.

Browse to \HKLM\SYSTEM\GWE\

Change the following values as you want :

cyHScr : Horizontal Scrollbars Height in pixels (default is 13)

cxHScr : Horizontal Scrollbars Width in pixels (default is 20)

cyVScr : Vertical Scrollbars Height in pixels (default is 20)

cxVScr : Vertical Scrollbars Width in pixels (default is 13)

- This will enable ClearType for the HTML viewer so any application displaying HTML will benefit from the ClearType technology.

Browse to

HKEY\_CURRENT\_USER\Software\Microsoft\Windows\CurrentVersion\Internet Settings\

Create a new DWORD Value, named "ClearTypeText"

Set its value to 1 to enable cleartype, changing it to 0 will disable it without the need to delete the value (so you can easily change it again).

- You can enable a battery warning that will be displayed when you insert a card while on battery power.

Browse to HKEY\_LOCAL\_MACHINE\Drivers\PCMCIA\

You can change the "NoBatteryCheck" value :

- 0 : enable the warning when inserting a card while on battery power
  - 1 : disable the warning (default value on Pocket PC)
- This registry modification will move Pocket Internet Explorer Temporary Internet Files to the storage card.

First, close Pocket Internet Explorer and move your "Temporary Internet Files\" folder and its subfolders from the "\\Windows\" folder to the "\\Storage Card\" folder.

Browse to

HKEY\_LOCAL\_MACHINE\SOFTWARE\Microsoft\Windows\CurrentVersion\Internet Settings\Cache\Content\

Change the "CachePath" value from "\\Windows\Temporary Internet Files\" to "\\Storage Card\Temporary Internet Files\".

Then browse to

HKEY\_LOCAL\_MACHINE\SOFTWARE\Microsoft\Windows\CurrentVersion\Internet Settings\Cache\Paths\

Change the "Directory" value from "\\Windows\Temporary Internet Files\" to "\\Storage Card\Temporary Internet Files\".

Browse to the Path1\, Path2\, Path3\ and Path4\ subkeys.

For each of them, replace "\\Windows\" with "\\Storage Card\" in the "CachePath" value, make sure you keep the ending of the string.

Remember this will make some problems if you remove the storage card to connect to the internet using a modem card !

This will work for both Mobile Favorites and pages you see while online with the Pocket PC, the only problem is ActiveSync report that the Mobile Favorites are not synchronized while they are.

I looked at the registry on both the Pocket PC and the desktop and sync dlls but couldn't find why ActiveSync doesn't see the content as synchronized.

- This registry modification will move AvantGo channels to the storage card.

First, close Pocket Internet Explorer and move your "avantgo\" folder and its subfolders from the "\\Windows\" folder to the "\\Storage Card\" folder.

Browse to HKEY\_CURRENT\_USER\\Software\\AvantGo\\

Change the "DatabaseLocation" value from "\\Windows\\avantgo" to "\\Storage Card\\avantgo".

Go to mobile link on your desktop and select settings, then properties for the server, and check refresh all content on next sync.

- This will add Windows Media Player Left and Right buttons mapping.
  - For WMP 4 (the one in ROM), browse to HKEY\_LOCAL\_MACHINE\\SOFTWARE\\Microsoft\\Windows Media Player\\Buttons\\
  - For WMP 7, browse to HKEY\_LOCAL\_MACHINE\\SOFTWARE\\Microsoft\\Windows Media Player 2\\Buttons\\

Create a new DWORD value, named "Right" and with 39 as the data.

Create another DWORD value, named "Left" and with 37 as the data.

- You can select the decompression quality used by Windows Media Player when it's running in the background.

Browse to HKEY\_LOCAL\_MACHINE\\SOFTWARE\\Microsoft\\Windows Media Player\\Parameters\\

You can change the "Background" value (if it does not exist yet, create it as a DWORD) :

- 0 : stop the playback when in the background
  - 1 : play at low quality, this use less CPU so the foreground application can run faster (this is the default when the value does not exist in the registry)
  - 2 : play at full quality, this may slow down the foreground application, but allow you to really enjoy the music while working or reading an eBook
- You can delete Today items, This can be usefull to delete Today Image PowerToy items :  
The Today Image PowerToy allow you to display an image on the Today screen, it also have an option to create another today image, so you can display two, and more as it will create another today image item each time you tap that button !  
But there is no option to remove today images you've created, so this is how to remove them.

Browse to \HKEY\_LOCAL\_MACHINE\SOFTWARE\Microsoft\Today\Items\  
Each Today item is a subkey, find the one you want and delete it.

- You can enable or disable script error warnings on Pocket Internet Explorer, this is usefull for web developers who want to test their web site correctly.

Browse to \HKCU\Software\Microsoft\Internet Explorer\Main\  
You can change the "ShowScriptErrors" value :

- 0 : do not show script errors (default value)
  - 1 : show script error warnings
- Pocket Internet Explorer pretend to be Internet Explorer 5.5 running on Windows 2000.  
Many web sites that require encryption do not verify if your browser support high encryption, they just check the browser version.  
This registry hack will make Pocket Internet Explorer identifies itself as Internet Explorer 5.5 running on Windows 2000, this may let you connect to web site that check the browser version, but it will also prevent web sites that provide Pocket PC specific content to be able to know you're actually using a Pocket PC.

Browse to  
HKEY\_LOCAL\_MACHINE\SOFTWARE\Microsoft\Windows\CurrentVersion\Internet Settings\User Agent\  
Change the default value from "Mozilla/2.0" to "Mozilla/4.0".  
Change the "Version" value from "MSIE 3.02" to "MSIE 5.5".  
Change the "Platform" value from "Windows CE" to "Windows NT 5.0".  
Some web sites may even just compare the user agent string, so if this is not enough,

browse to the Post Platform\ sub key and delete the "240x320" value (it have no data).

Pocketfleet and its owner are not responsible for system crashed or damage due to improper registry editing. This editor will allow removal or changes to registry entries that could result in damage to the system or undesired operation.

You may contact the author at [pockethelp@rogers.com](mailto:pockethelp@rogers.com) for any problems or suggestions.

Pocketfleet's vendor partners are the only authorized reseller and are responsible for receiving payment and issuing refunds. Bulk purchase agreements may be obtained from the vendors or the author.

Due to the ease of reproducing software, There are no refunds on Software. The author is not responsible for problems or loss due to incompatibility or incorrect installation. There is no warranty on this program and is for use on one device only. This software may not be distributed, copied or included in any other package without the written consent of the author. This software is Copyright © 2003, Don Laverdure, ALL RIGHTS ARE RESERVED.